

TMJ Occlusion Atlas, Version 1

Electronic Atlas of Human Occlusion and the Temporomandibular Joint

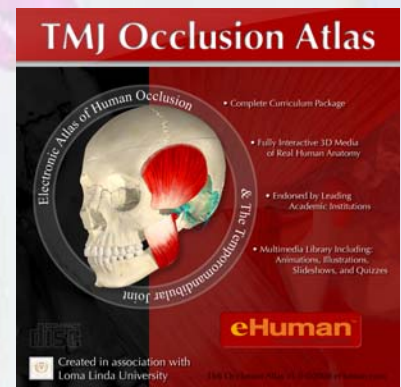
Dental Education Goes Digital

Dentistry is among the most spatially complex disciplines in medicine. Two-dimensional teaching in our 3-D world challenges educators, students, manufacturers and practitioners. Brown and Herbranson's interactive 3-D teaching software, integrated curricula and state-of-the-art dental simulators revolutionize comprehension, training and educational efficacy thanks to a new, digital learning paradigm.

Product Features

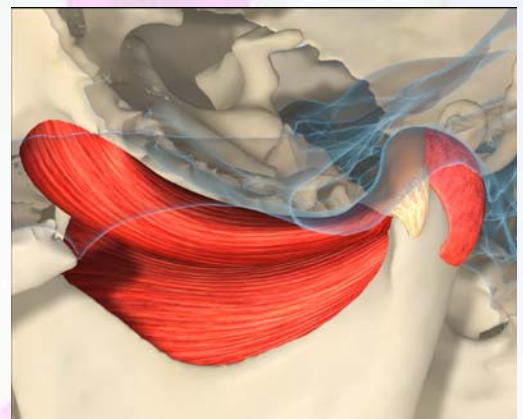
Produced in cooperation with Dr. Charles Goodacre, Dean of Loma Linda School of Dentistry, Brown and Herbranson's TMJ/Occlusion Atlas is a revolutionary educational tool for use by educators, practitioners, dental and hygiene students and office staff. It combines ultra-high quality computer models and illustrations derived from real anatomy with state-of-the-art viewing and interaction protocols.

The images shown here represent modules that enable breakthrough educational effectiveness across the full spectrum of academic and commercial curricula. Its interactive 3-D models vastly improve comprehension and retention of dentistry's complex spatial structures and concepts.

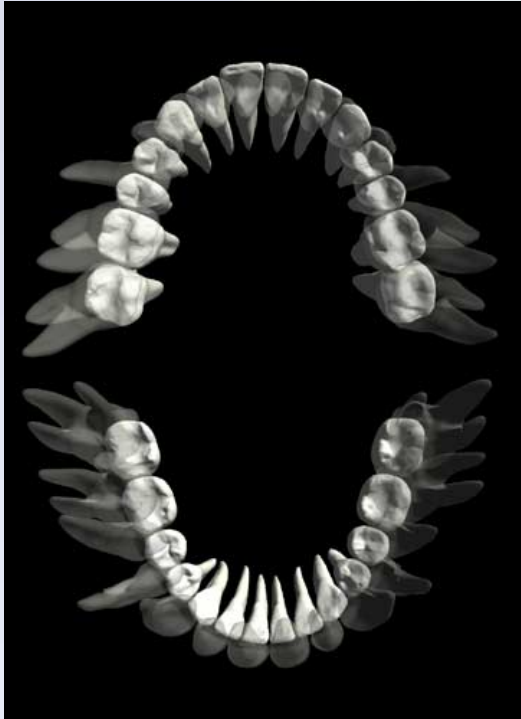


An Overview of the Stomatognathic System: This section reviews the function of the oral system. It includes general discussion of mastication and swallowing, respiration and speech, esthetics, attractiveness, pleasure and health.

Anatomy: Anatomy is at the core of the practice of dentistry. This module, authored by Dr Chuck McNeil, is a comprehensive review of the anatomy of the entire stomatognathic system. It includes detailed anatomy of the temporomandibular joint with its unique structures, the muscles of mastication, the ligaments, the innervations and blood supply. The information is displayed in animations based on real anatomy and dissection images with annotations. The models developed for this section are the most detailed, accurate and complete computer models of the TMJ. Included in this section is a library of clinical tomography data with a viewer to show normal and pathological conditions of the joint.



Mandibular Movements: All the mandibular movements are illustrated with interactive 3D models and movies, including opening, closing, protrusive, retrusive, working and non-working side movements, latero-protrusive, border movements and the envelope of movements. These movements are illustrated and described during mastication, swallowing, respiration and speech. There is a full discussion of the condylar movements and the envelope of movements, which are illustrated with animations based on real anatomy.



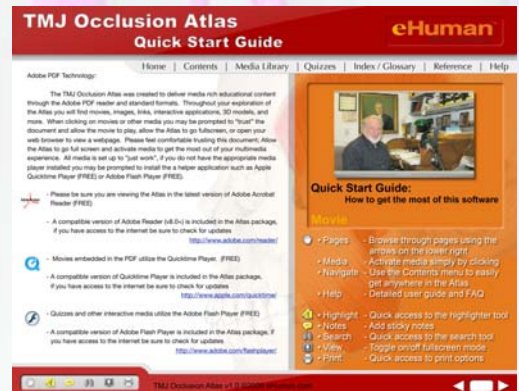
Tooth Form and Occlusal Relationship: This section includes illustrations of the natural morphology of the occlusal surface as well as a discussion of creating in wax the occlusal surface. This section also includes the interdigitation of the occlusal surfaces through description and illustration of the classic Angle Class I, II and III relationships. The location of the contacts in both cusp-marginal ridge and cusp-fossa occlusal relationships are described and illustrated.

Virtual Articulator: This **virtual articulator** allows for real time occlusal adjustment of the computer occlusion models. Angle Class I, II and III occlusions are included to illustrate how these variations affect the occlusal adjustment. Teeth can be individually repositioned to introduce interferences. The articulator, which allows for lateral and protrusive movements, is **haptic enabled**. When combined with the dental simulator under development by Brown and Herbranson, the operator will experience the “feel” of a virtual headpiece in operation.

Libraries: Libraries of the Atlas’s animations and videos will be available as a separate feature and as a search function.

Interactive Programs and Self Assessment: The Atlas includes a number of review and self- assessment modules for students.

Glossary of Occlusion Terms: The glossary features 300 occlusion term and definitions contributed by the American College of Prosthodontists.



Purchasing information for academic institutions, contact:
sales@eHuman.com or 650.233.0200

Individual CD Edition copies available online:
www.eHuman.com

For other inquiries, please contact:
Bruce Fogel, VP Sales: bfogel@eHuman.com
 650.233.0200 Office
 650.823.2137 Mobile



*Brown & Herbranson Atlases are available as an individual CD Edition or Server Edition with perpetual or annual licenses
 ©Brown & Herbranson Imaging, Inc. MeshView® and Tooth Atlas® are registered trademarks of Brown & Herbranson*